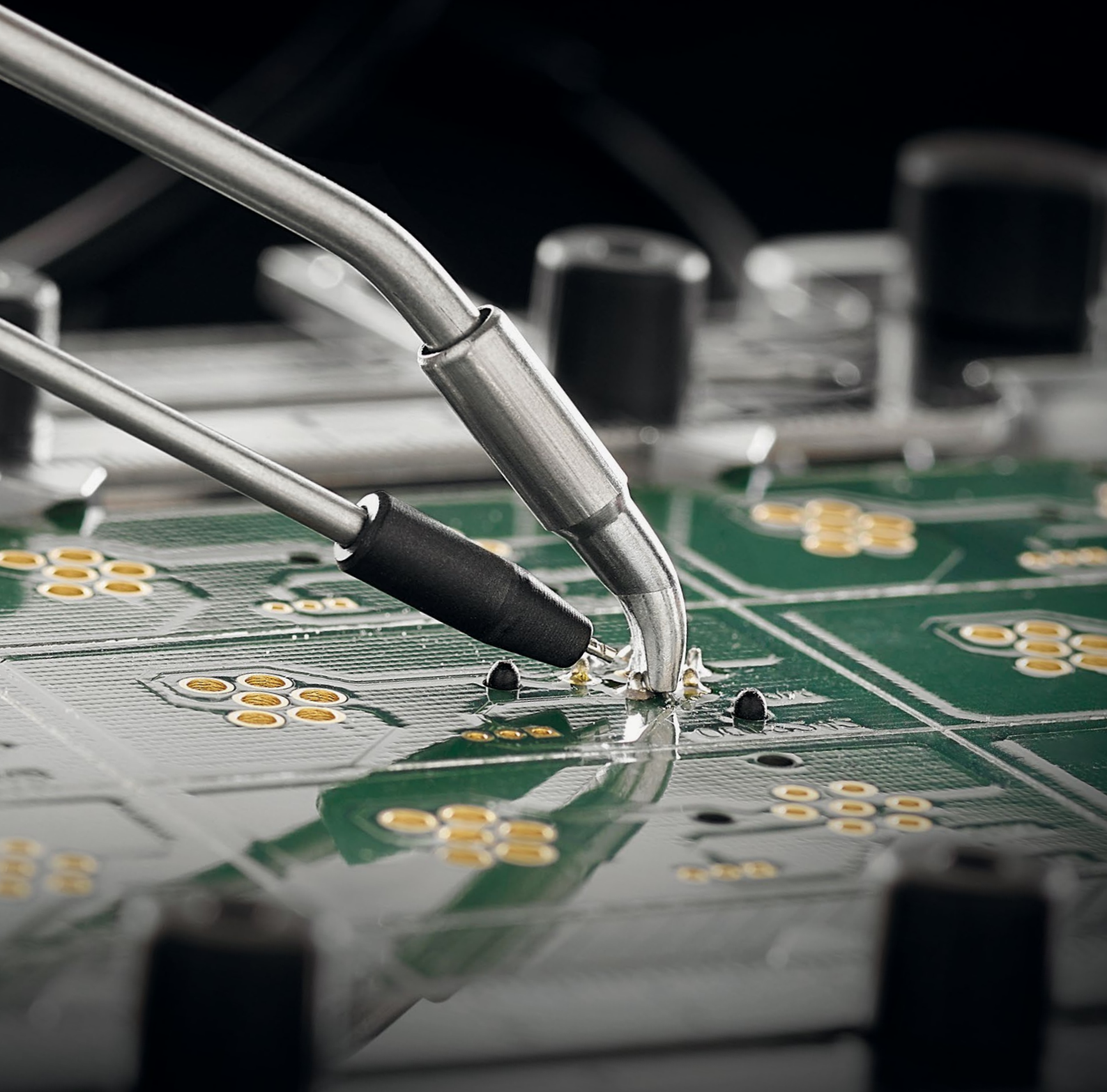


JBC

The Soldering Co.



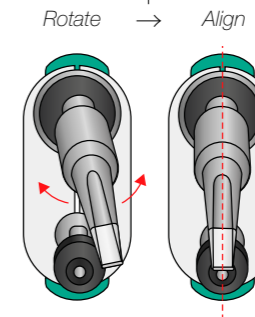
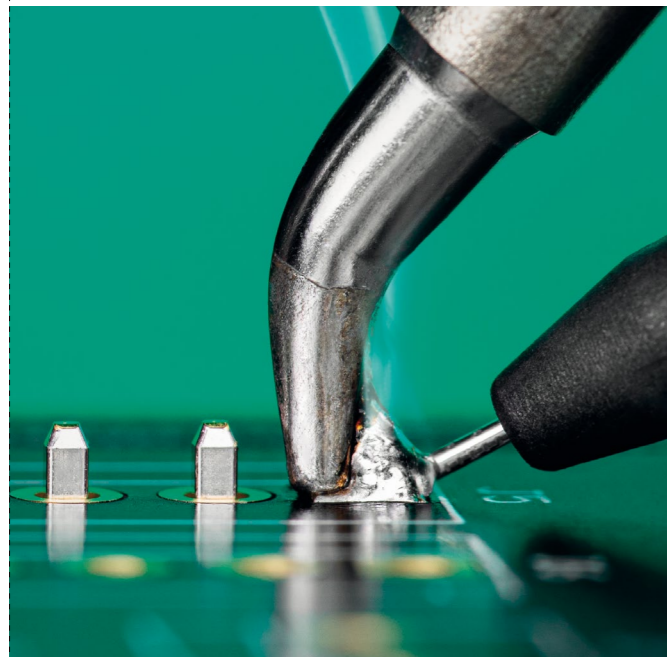
Automatic-Feed Soldering Iron

Increase adaptability allowing better access

ALE250-B Automatic-Feed Soldering Iron

Maximize your production line with the precision and comfort you need.

- ▶ **Ergonomic hand positioning** allows optimization in repetitive processes.
- ▶ A dynamic tool setting makes it **ideal to reach different solder joints**.
- ▶ Two drag buttons for **increased adaptability** and improved access to challenging solder joints.
- ▶ Works exclusively with **ALE Automatic-Feed Soldering Station**.



Easy Cartridge Alignment

The rotation system guarantees that the **cartridge is perfectly aligned with the guide** allowing higher precision while soldering.

Dragging buttons

A tool that adapts

Its two dragging buttons **make repetitive tasks easy**, especially when having to reach difficult solder joints in different positions.

The operator can use the tool **choosing between two different settings**. Each setting uses its own cartridge range.

Straight Guide and Curved Cartridge



C250 Cartridge Range



Outlet Nozzle

The tip of the guide has a threaded mechanism making the change of nozzles efficient.

Curved Guide and Straight Cartridge

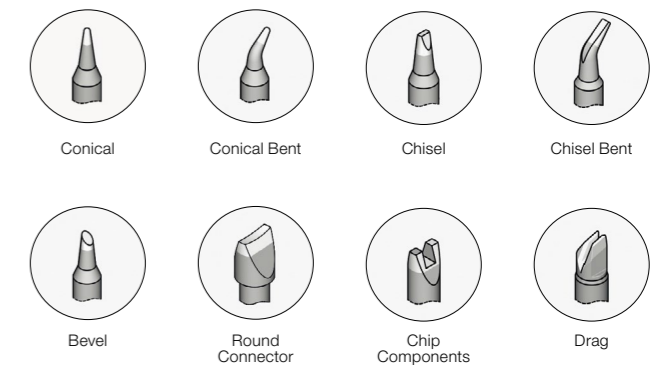


C245L Cartridge Range



Cartridge Ranges

C250 Cartridge Range to work with **Straight Guide**.
C245L Cartridge Range to use in combination with **Curved Guide**.



C250 Cartridge Range



C245L Cartridge Range

Solder Wire Guide Kits

Ref. with Solder-Wire Perforation

Ref.	Solder Wire Ø
GALE08V	0.8 mm / 0.032 in
GALE10V	1.0 mm / 0.040 in
GALE12V	1.2 mm / 0.047 in
GALE15V	1.5 mm / 0.059 in
GALE16V	1.6 mm / 0.063 in



Ref. without Solder-Wire Perforation

Ref.	Solder Wire Ø
GALE04D	0.38-0.40 mm / 0.015-0.016 in
GALE05D	0.46-0.56 mm / 0.018-0.022 in
GALE06D	0.60-0.64 mm / 0.023-0.025 in
GALE07D	0.70-0.78 mm / 0.028-0.031 in
GALE08D	0.80-0.82 mm / 0.032-0.033 in

Ref.	Solder Wire Ø
GALE10D	0.90-1.10 mm / 0.036-0.044 in
GALE12D	1.14-1.27 mm / 0.045-0.051 in
GALE15D	1.50-1.57 mm / 0.060-0.063 in
GALE16D	1.60-1.63 mm / 0.063-0.065 in
GALE18D	1.80 mm / 0.073 in

Curved Solder Wire Guide



Ref.	Solder Wire Ø
0032589	0.4 -1.2 mm / 0.015 - 0.047 in

ALE Automatic-Feed Soldering Station

Ideal for soldering processes requiring **high productivity**.

- ▶ Consistently dispense programmed amounts, ensuring **uniform soldering joints**.
- ▶ Work without interruptions makes the **process more efficient**.
- ▶ Makes soldering cable and THT components easy, giving the operator **one free hand** for more stability in the soldering process.

