

JBC

www.jbctools.com

INSTRUCTION MANUAL



F4468

Fume Extractor for ALE250

This manual corresponds to the following reference:

F4468

Packing List

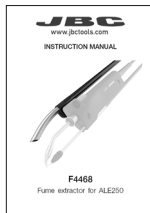
The following items are included:



Fume Extractor 1 unit




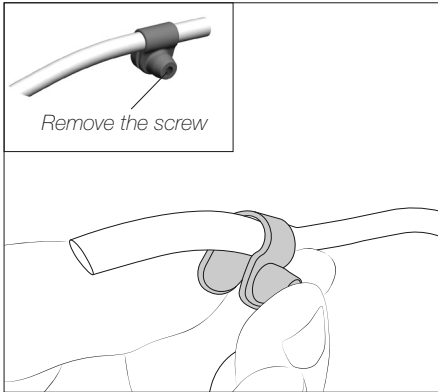
Cleaning Brush 1 unit



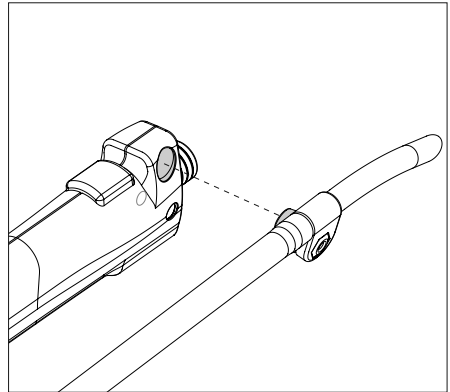
Manual 1 unit
Ref. 0005928

Assembly

 Make sure that the station is disconnected from the mains and that the equipment has cooled down.

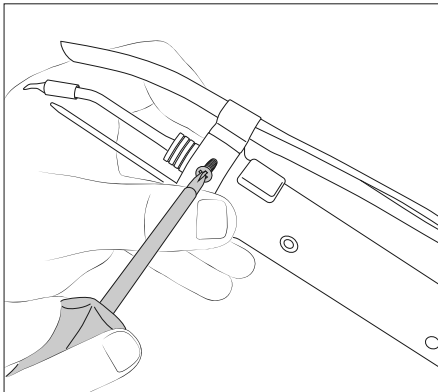


1. Unscrew the suction nozzle's clamp and take out the screw. Make sure that the nut and the suction nozzle stay in place.

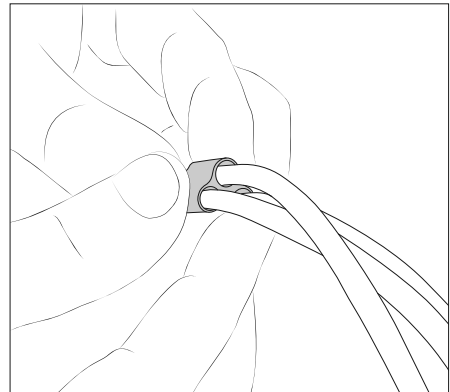


2. Assemble the suction nozzle and the clamp to the tool by matching the protrusion of the clamp with one of the side hollows of the tool (2).

Note: The fume extractor can be positioned on either side of the tool, depending on whether the user is right- or left-handed (it should be placed on the side facing the user).



3. Once the suction nozzle is in the desired position and angle, use the screw to fix it in place.



4. Use the tube clamps to hold all the tubes and cables so that they are more manageable and tidy.

Specifications

F4468

Fume Extractor for ALE250

Ref.: F4468

- Tube Diameter: Ø 6 mm
- Length: 2 m / 74.78 ft
- Total Net Weight: 79.9 g / 0.18
- Package Dimensions / Weight: 245 x 185 x 45 mm / 150 g
(L x W x H) 9.65 x 7.28 x 1.77 in / 0.33 lb

Complies with CE standards.

JBC

Warranty

JBC's 2 year warranty covers this equipment against all manufacturing defects, including the replacement of defective parts and labor.

Warranty does not cover product wear or misuse.

In order for the warranty to be valid, equipment must be returned, postage paid, to the dealer where it was purchased.



This product should not be thrown in the garbage.

In accordance with the European directive 2012/19/EU, electronic equipment at the end of its life must be collected and returned to an authorized recycling facility.



www.jbctools.com