

Packing List

For ref. MS10:



Front Filter Set for MSE-B 1 set

(Each set includes 5 filters)

Manual 1 unit

Ref. 0034152

0034152-120325

MS10 filters are used with MSE-B.



Front Filter

MSE

Electric Desoldering Module

JBC

www.jbctools.com

INSTRUCTION MANUAL



MS10

Front Filter Set for MSE-B

Top side



Bottom side

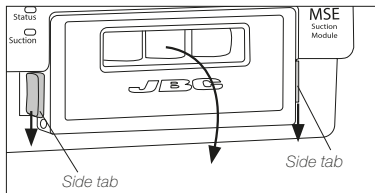


www.jbctools.com

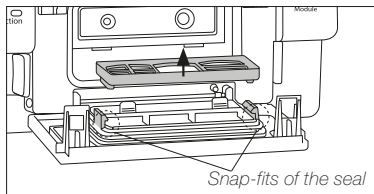


Filter Replacement

1. Sliding down the side tabs and open the front lid.

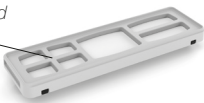


2. Remove the worn filter by pulling it upwards out of the snap-fits.

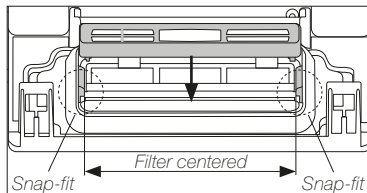


3. Position the new filter with its clear side strud upwards and with the cross-shaped strud at the left side.

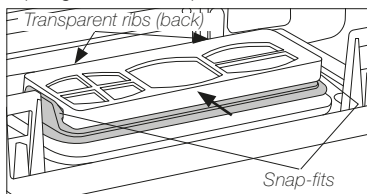
Cross-shaped strud



4. Center the filter between the snap-fits and push it in.



5. Push the positioned filter back until it stops against the transparent ribs.



6. Close* the front lid by pressing against its both upper corners until it clicks.

