

Packing List

One of the following sets is included depending on the purchased reference:



DT10

Wool Filter 1 box

Contains 10 filters

DT11

Brass-Wool

Prefilter 1 box

Contains 10 filters

0033478-011024

JBC

www.jbctools.com

INSTRUCTION MANUAL



DT10 / DT11

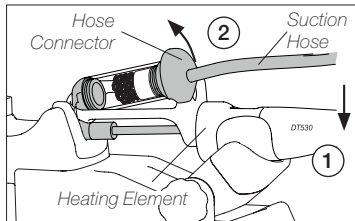
Wool Filter / Brass-Wool
Prefilter for DT530

Filter Replacement



Be careful when manipulating the tool. The metal and glass parts may be hot.

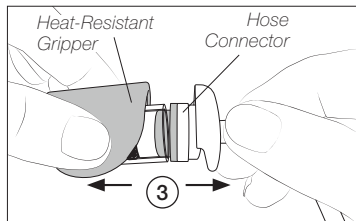
Hold down the tool with one hand onto the stand (1) and grasp the suction hose at the point where it meets the hose connector and pull upward (2) to undock the solder-collector group from the heating element.



www.jbctools.com

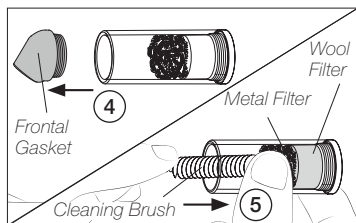


Detach the hose connector from the solder-collector by gently pulling both in opposite directions (3). If the solder-collector is too hot, use the heat-resistant gripper provided with the tool.

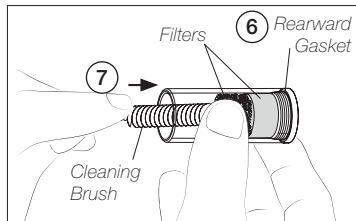


Then remove the frontal gasket by pulling it out as well (4).

Use the cleaning brush provided with the tool to push the worn filters and the rearward gasket out of the cylinder (5). Replace the worn filters and slide back in the new ones.



Fit the rearward gasket onto the cylinder (6) so that the wool filter lays on the same side as the rearward gasket. Push both filters as far as possible against the rearward gasket using the cleaning brush (7).



Fit the front gasket onto the glass cylinder and reassemble the solder-collector to the hose connector. Finally reassemble the whole collector group to the desoldering iron.